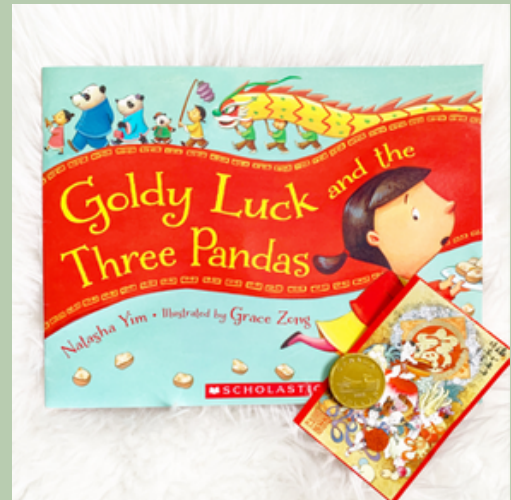
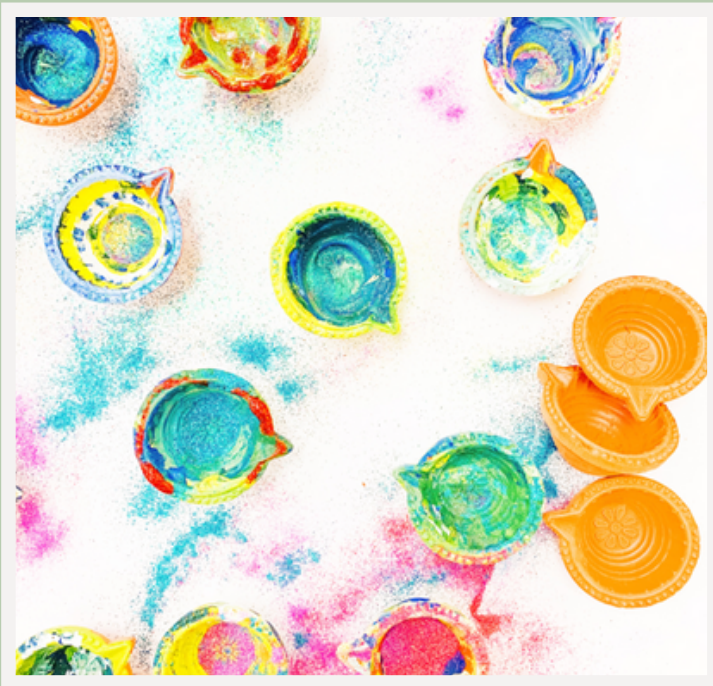


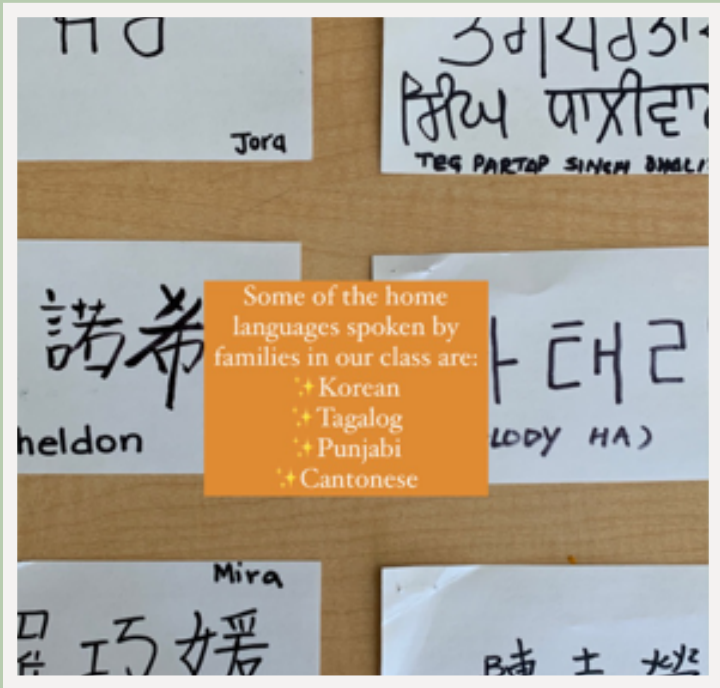
TIP Sheet



CULTURAL CELEBRATIONS

Some ideas to go beyond books and decorative arts and crafts include learning letters, numbers, simple words and simple games from other cultures. Create a newsletter and ask families for resources such as games, songs, and favourite decorations they can lend your ECE setting. Co-create cultural celebration decorations and activities with families and children.

TIP Sheet

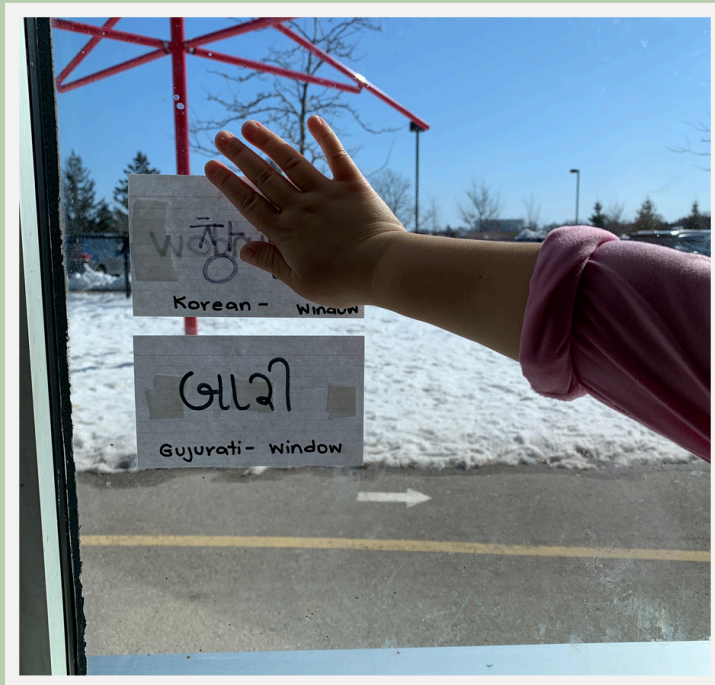
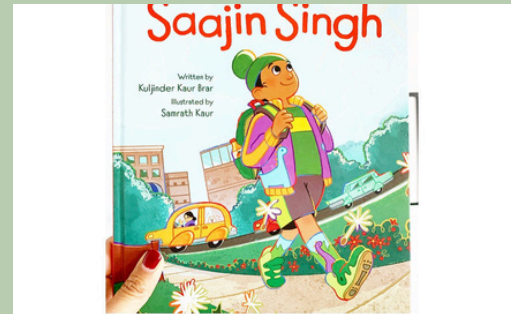


TIPS TO ENGAGE FAMILIES IN ECE SETTINGS

- Invite families to participate in decision-making and goal-setting for their child.
- Engage families in two-way communication. This can be through conversations, notes and apps.
- Engage families in ways that are truly reciprocal.
- Provide learning activities for the home and in the community.
- Invite families to actively participate in making program-level decisions and wider advocacy, such as parent committees, volunteer opportunities and co-creating learning opportunities.

TIP

Sheet

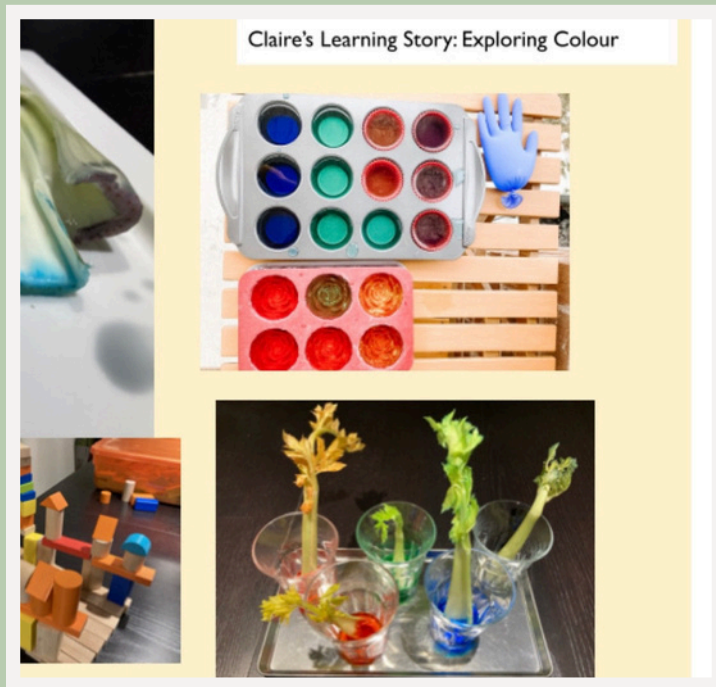


HOW TO CREATE CULTURALLY RESPONSIVE LEARNING ENVIRONMENTS

- Integrate children's own vocabulary and home language words during play.
- Encourage academic learning and supports learning through culturally relevant referents (resources).
- Incorporate children's names in their home language in print in areas such as cubbies, name tags and games.
- Incorporate children's home language in the learning environment in common furniture such as windows, door, table, and other common words.

TIP

Sheet



CULTURALLY RESPONSIVE PEDAGOGICAL DOCUMENTATION

- Focus on areas of documentation such as care, friendship, sense of belonging and community in addition to developmental and academic milestones.
- Use technology (Google Drive, apps, etc) to create documentation that families can easily add to.
- Encourage families to contribute to pedagogical documentation through a variety of communication methods such as voice notes, photographs, writing in their home language and face-to-face conversations.
- Remember that documentation is a process! Sometimes it may feel clumsy, challenging and difficult to work deeply with each child. Take your time and be patient with yourself!